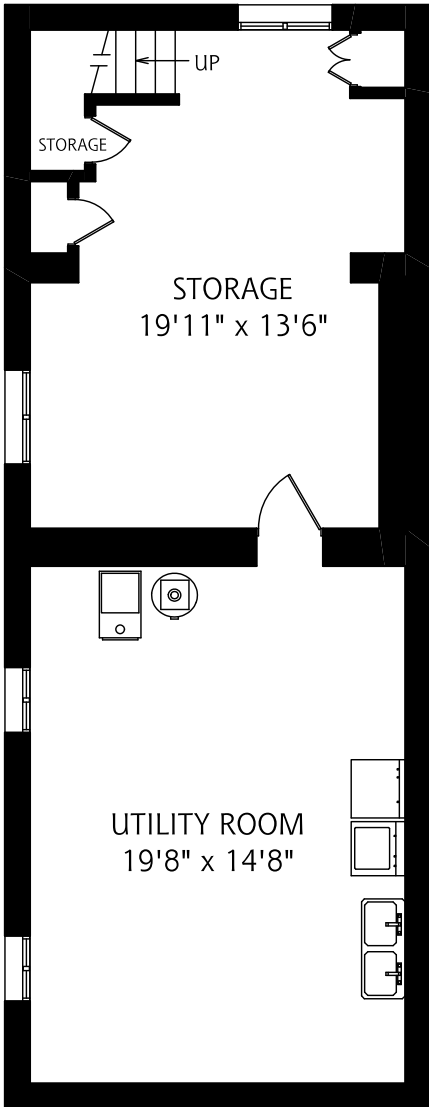
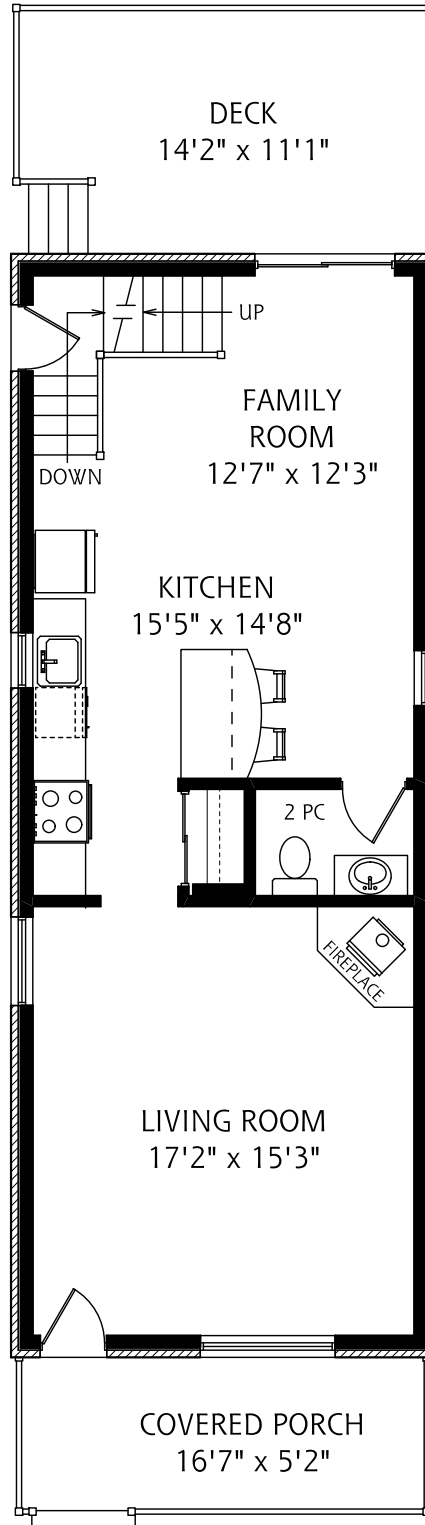


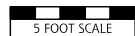
80 BROWNVILLE AVENUE



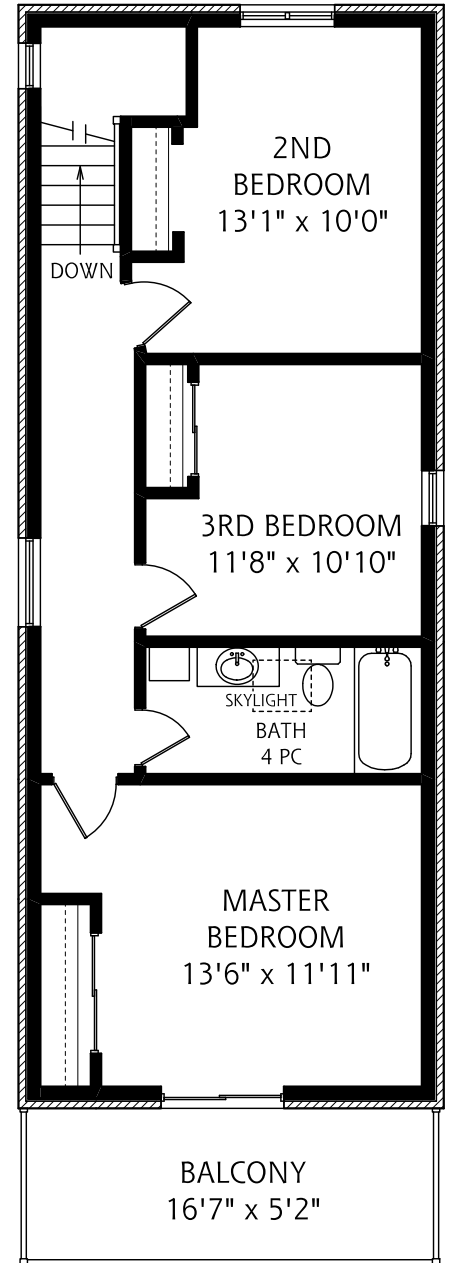
LOWER LEVEL
755 SQUARE FEET



MAIN FLOOR
755 SQUARE FEET



ALL MEASUREMENTS SHOULD BE CONSIDERED APPROXIMATE



SECOND FLOOR
755 SQUARE FEET



GEORGE O'NEILL

Royal LePage Estate Realty, Brokerage
416.690.5100



REAL FLOOR PLANS
www.realfloorplans.com

MAY 31, 2010 - COLIN THOMSON - 416-800-7526