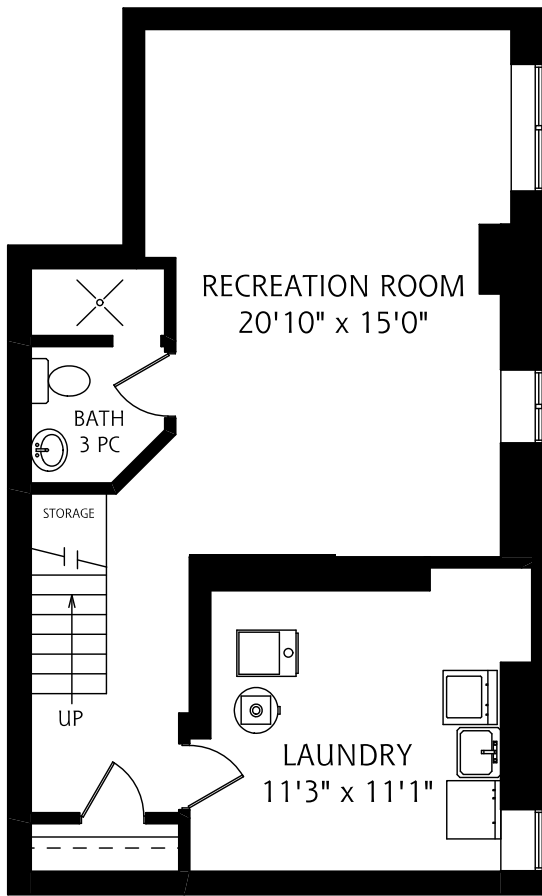
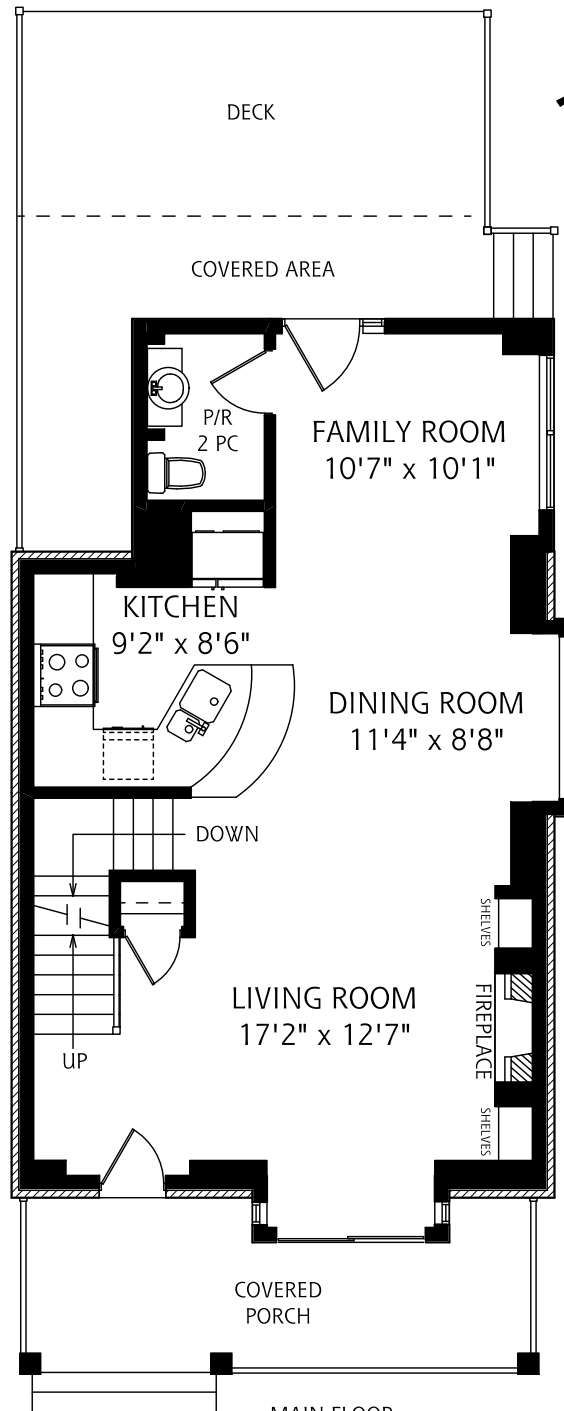


135 BELLEFAIR AVENUE



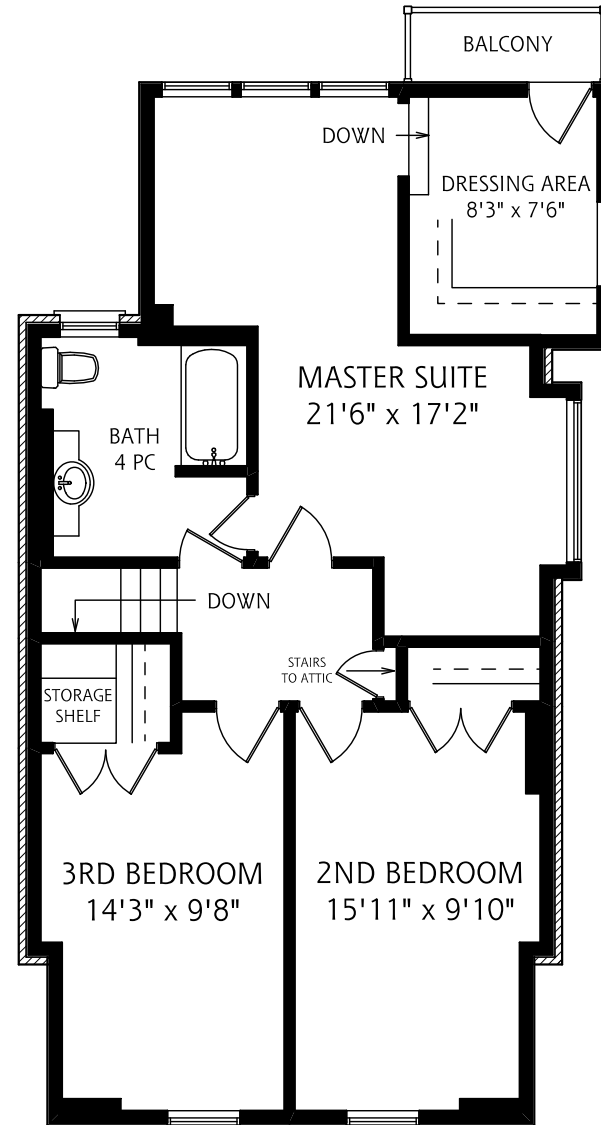
LOWER LEVEL
716 SQUARE FEET



MAIN FLOOR
741 SQUARE FEET



ALL MEASUREMENTS SHOULD BE CONSIDERED APPROXIMATE



SECOND FLOOR
877 SQUARE FEET

PRESENTED BY
GEORGE O'NEILL
ROYAL LEPAGE
ESTATE REALTY, BROKERAGE
(416) 690 - 5100

REAL FLOOR PLANS
www.realfloorplans.com
FEB 26, 2008 - COLIN THOMSON - 416-800-7526