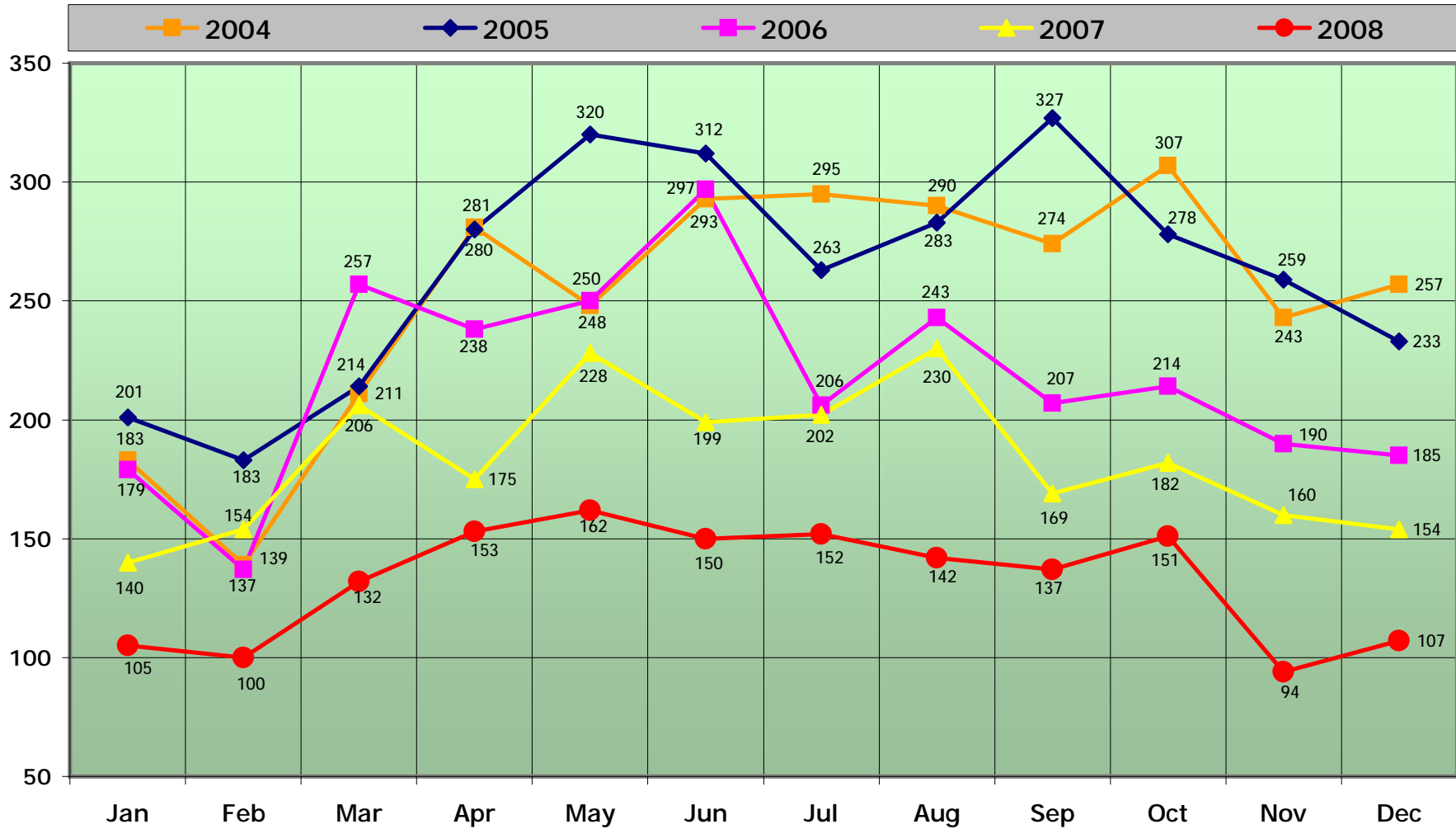
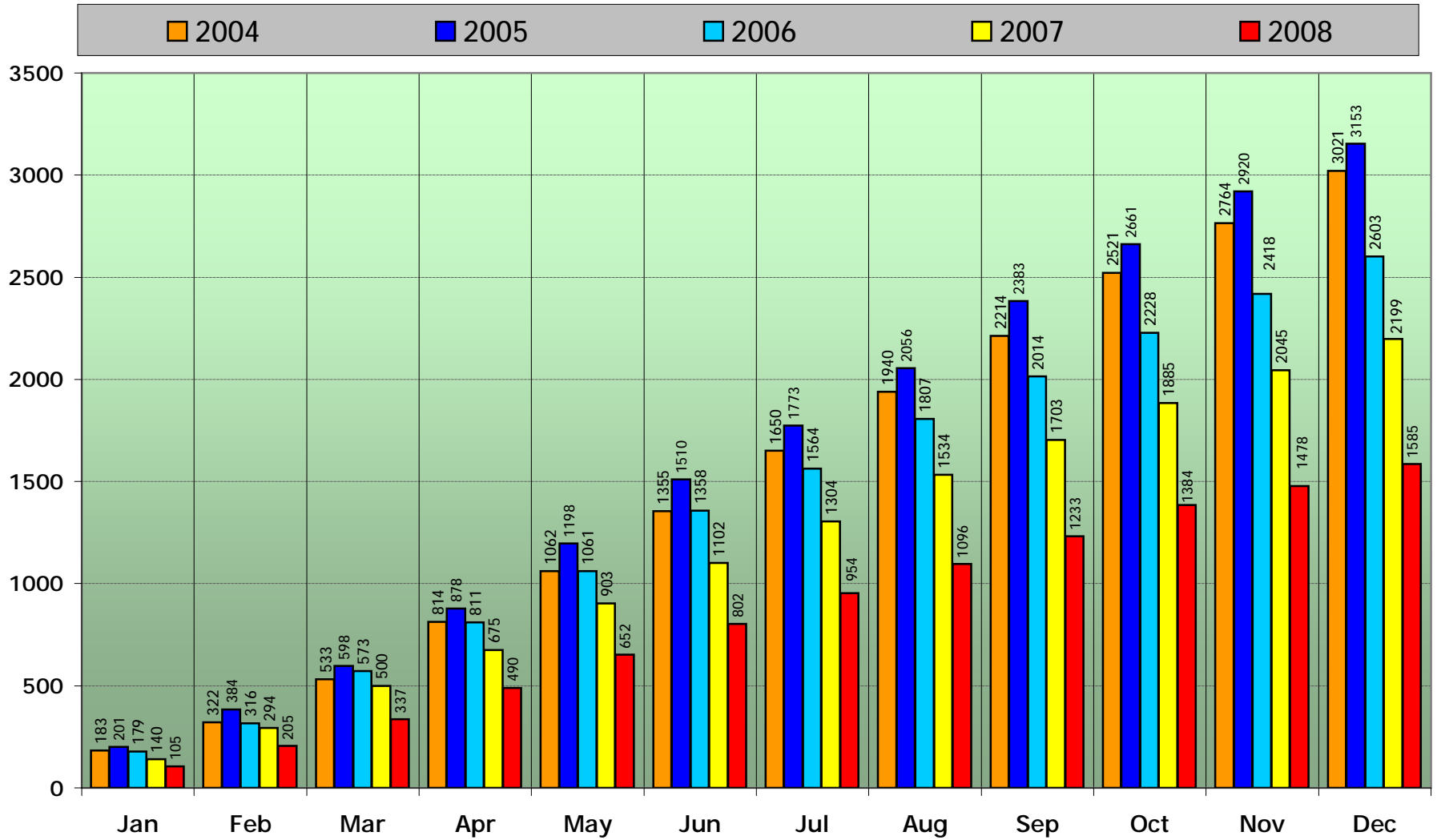


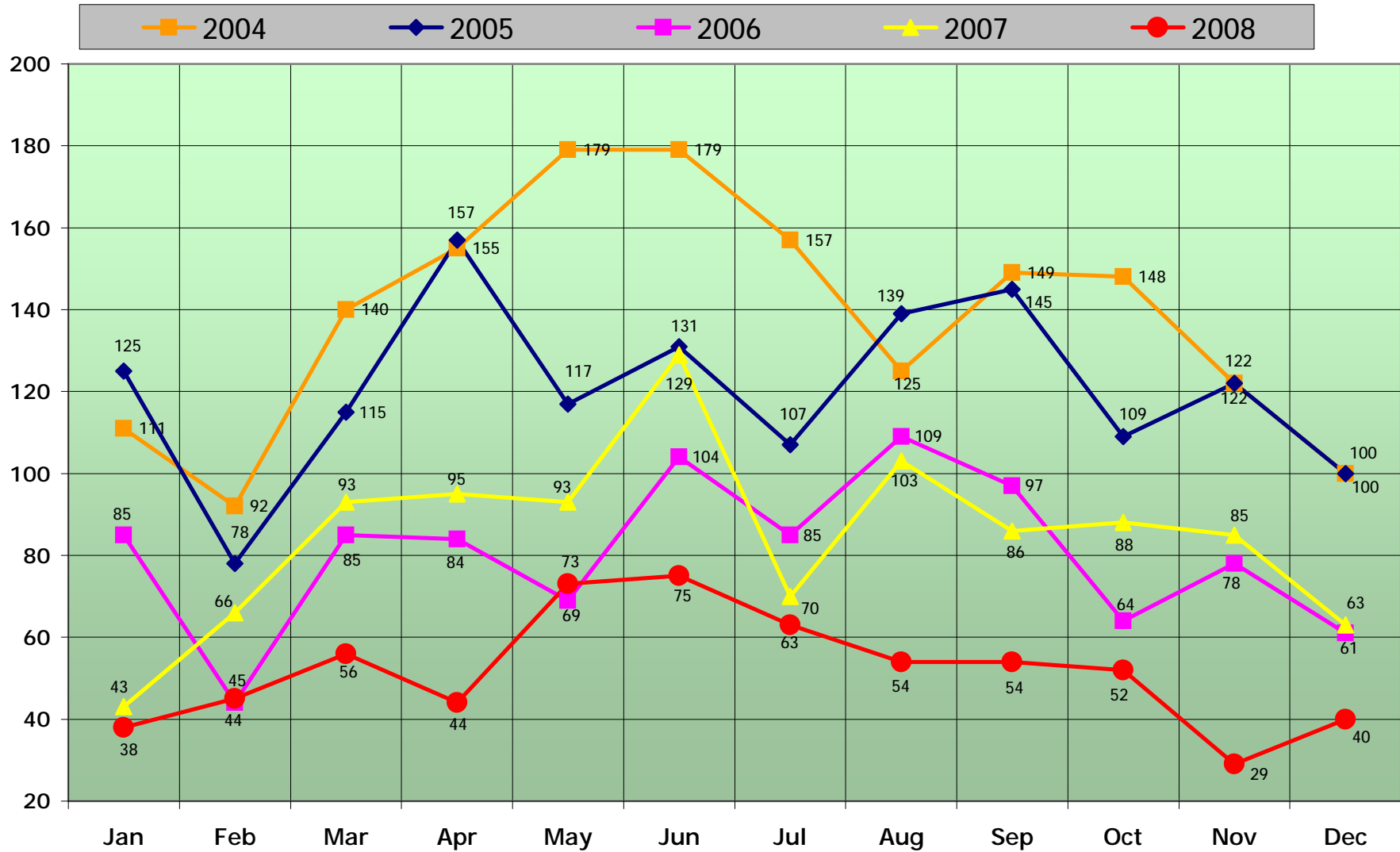
## Single Family Houses in Sussex County - Closed Transactions by Month 2004 - 2008



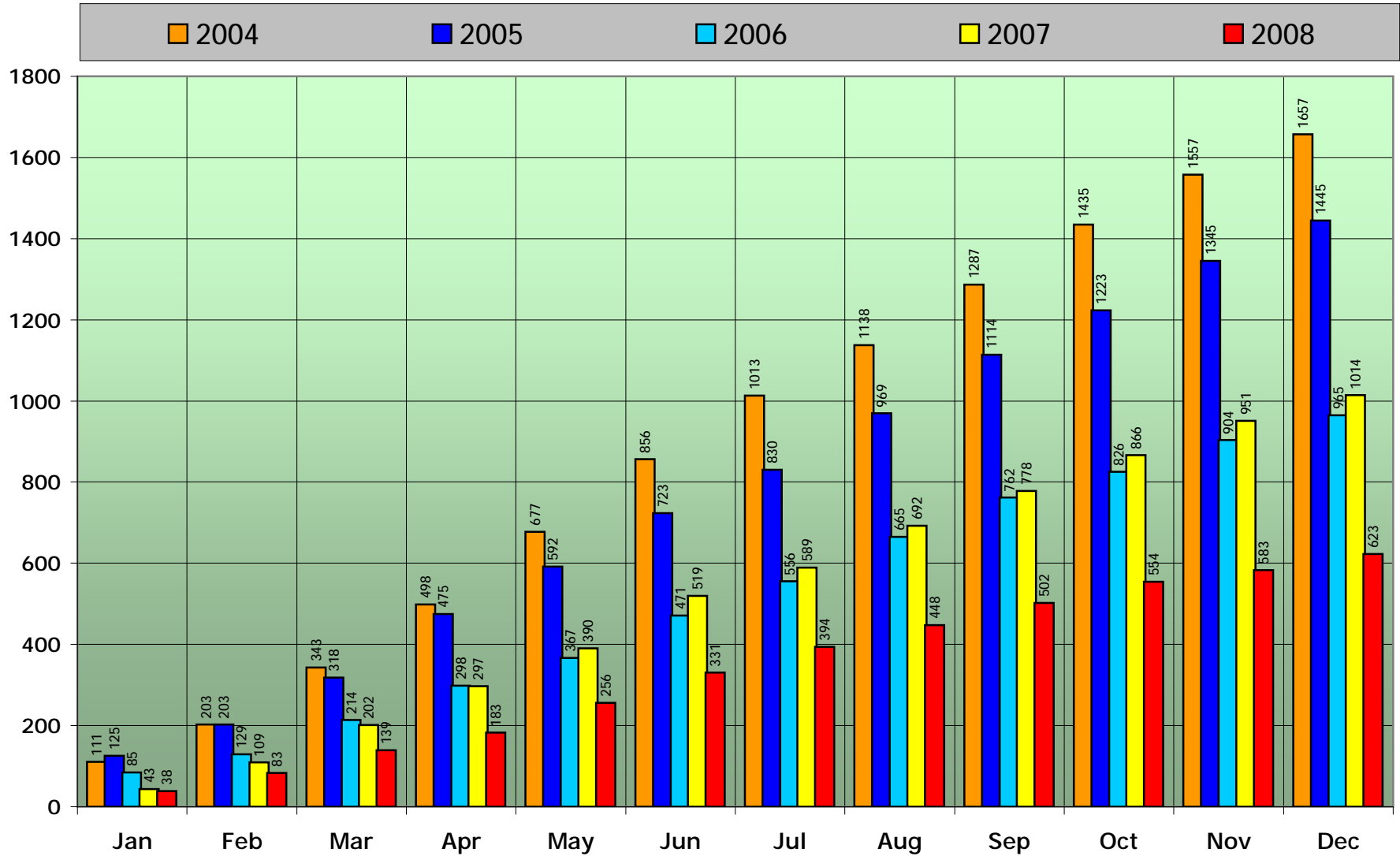
## Sussex County Single Family Closed Transactions Year To Date Cumulative by Month 2004 - 2008



## Sussex County Condo/Townhouses - Closed Transactions by Month 2004 - 2008



## Sussex County Condo/TH Closed Transactions Year To Date Cumulative by Month 2004 - 2008



	SF		C/TH		SF YTD		C/TH YTD		Compared to Prior Year				
									#	%	#	%	
Jan-04	183	111	183	111									Jan
Feb-04	139	92	322	203	#	%							Feb
Mar-04	211	140	533	343									Mar
Apr-04	281	155	814	498									Apr
May-04	248	179	1062	677									May
Jun-04	293	179	1355	856									Jun
Jul-04	295	157	1650	1013									Jul
Aug-04	290	125	1940	1138					N/A		N/A		Aug
Sep-04	274	149	2214	1287									Sep
Oct-04	307	148	2521	1435									Oct
Nov-04	243	122	2764	1557									Nov
<b>Dec-04</b>	<b>257</b>	<b>100</b>	<b>3021</b>	<b>1657</b>									Dec
Jan-05	201	125	201	125	18	9.8%	14	12.6%					
Feb-05	183	78	384	203	62	19.3%	0	0.0%					
Mar-05	214	115	598	318	65	12.2%	-25	-7.3%					
Apr-05	280	157	878	475	64	7.9%	-23	-4.6%					
May-05	320	117	1198	592	136	12.8%	-85	-12.6%					
Jun-05	312	131	1510	723	155	11.4%	-133	-15.5%					
Jul-05	263	107	1773	830	123	7.5%	-183	-18.1%					
Aug-05	283	139	2056	969	116	6.0%	-169	-14.9%					
Sep-05	327	145	2383	1114	169	7.6%	-173	-13.4%					
Oct-05	278	109	2661	1223	140	5.6%	-212	-14.8%					
Nov-05	259	122	2920	1345	156	5.6%	-212	-13.6%					
<b>Dec-05</b>	<b>233</b>	<b>100</b>	<b>3153</b>	<b>1445</b>	132	4.4%	-212	-12.8%					
Jan-06	179	85	179	85	-22	-10.9%	-40	-32.0%					
Feb-06	137	44	316	129	-68	-17.7%	-74	-36.5%					
Mar-06	257	85	573	214	-25	-4.2%	-104	-32.7%					
Apr-06	238	84	811	298	-67	-7.6%	-177	-37.3%					
May-06	250	69	1061	367	-137	-11.4%	-225	-38.0%					
Jun-06	297	104	1358	471	-152	-10.1%	-252	-34.9%					
Jul-06	206	85	1564	556	-209	-11.8%	-274	-33.0%					
Aug-06	243	109	1807	665	-249	-12.1%	-304	-31.4%					
Sep-06	207	97	2014	762	-369	-15.5%	-352	-31.6%					
Oct-06	214	64	2228	826	-433	-16.3%	-397	-32.5%					
Nov-06	190	78	2418	904	-502	-17.2%	-441	-32.8%					
<b>Dec-06</b>	<b>185</b>	<b>61</b>	<b>2603</b>	<b>965</b>	-550	-17.4%	-480	-33.2%					
Jan-07	140	43	140	43	-39	-21.8%	-42	-49.4%					
Feb-07	154	66	294	109	-22	-7.0%	-20	-15.5%					
Mar-07	206	93	500	202	-73	-12.7%	-12	-5.6%					
Apr-07	175	95	675	297	-136	-16.8%	-1	-0.3%					
May-07	228	93	903	390	-158	-14.9%	23	6.3%					
Jun-07	199	129	1102	519	-256	-18.9%	48	10.2%					
Jul-07	202	70	1304	589	-260	-16.6%	33	5.9%					
Aug-07	230	103	1534	692	-273	-15.1%	27	4.1%					
Sep-07	169	86	1703	778	-311	-15.4%	16	2.1%					
Oct-07	182	88	1885	866	-343	-15.4%	40	4.8%					
Nov-07	160	85	2045	951	-373	-15.4%	47	5.2%					
<b>Dec-07</b>	<b>154</b>	<b>63</b>	<b>2199</b>	<b>1014</b>	-404	-15.5%	49	5.1%					
Jan-08	105	38	105	38	-35	-25.0%	-5	-11.6%					
Feb-08	100	45	205	83	-89	-30.3%	-26	-23.9%					
Mar-08	132	56	337	139	-163	-32.6%	-63	-31.2%					
Apr-08	153	44	490	183	-185	-27.4%	-114	-38.4%					
May-08	162	73	652	256	-251	-27.8%	-134	-34.4%					
Jun-08	150	75	802	331	-300	-27.2%	-188	-36.2%					
Jul-08	152	63	954	394	-350	-26.8%	-195	-33.1%					

Aug-08	142	54	1096	448	-438	-28.6%	-244	-35.3%
Sep-08	137	54	1233	502	-470	-27.6%	-276	-35.5%
Oct-08	151	52	1384	554	-501	-26.6%	-312	-36.0%
Nov-08	94	29	1478	583	-567	-27.7%	-368	-38.7%
<b>Dec-08</b>	<b>107</b>	<b>40</b>	<b>1585</b>	<b>623</b>	-614	-27.9%	-391	-38.6%

Jan-09  
 Feb-09  
 Mar-09  
 Apr-09  
 May-09  
 Jun-09  
 Jul-09  
 Sep-09  
 Sep-09  
 Oct-09  
 Nov-09  
**Dec-09**