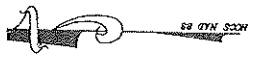


CURVE	LENGTH	RADIUS	BEARING	CHORD
C34	6.13	325.00	N46°59'45"E	5.13
C52	8.55	275.00	N47°26'05"E	8.45
C53	25.89	325.00	S48°40'33"W	25.88
C54	75.17	325.00	S57°44'02"W	75.00
C55	44.92	325.00	S66°19'10"W	44.89
C56	21.03	285.00	N48°11'05"E	20.41
C57	19.82	50.00	S35°19'57"W	19.50
C58	45.57	50.00	S72°41'14"W	44.01
C59	39.28	50.00	N56°41'43"W	38.28
C60	42.68	50.00	N11°44'07"W	41.40
C61	35.76	50.00	N33°12'22"E	35.00
C62	58.27	50.00	N87°04'53"E	55.03
C63	14.45	25.00	N76°05'40"W	14.25
C64	6.57	25.00	S78°48'38"W	6.65
C65	98.14	275.00	S67°03'21"W	97.62
C66	25.38	275.00	S49°11'15"W	25.37

NOW OR FORMERLY
 CHARLES RAYMOND BEESON, J
 PIN ID: 6801-02-96-1618

PRELIMINARY PLAT FOR
 NOT FOR SALES

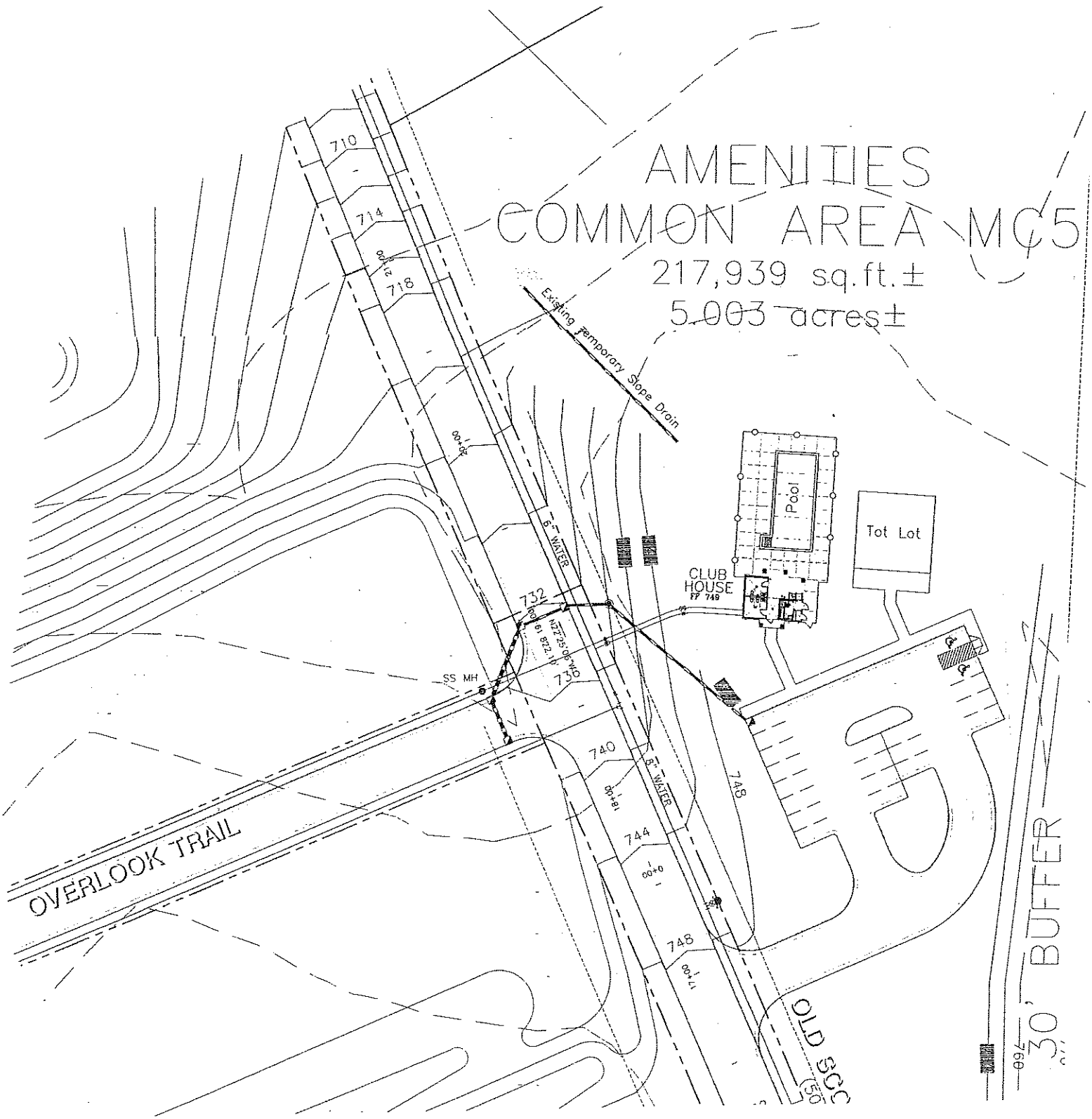
SEE PAGE 1 OF 2



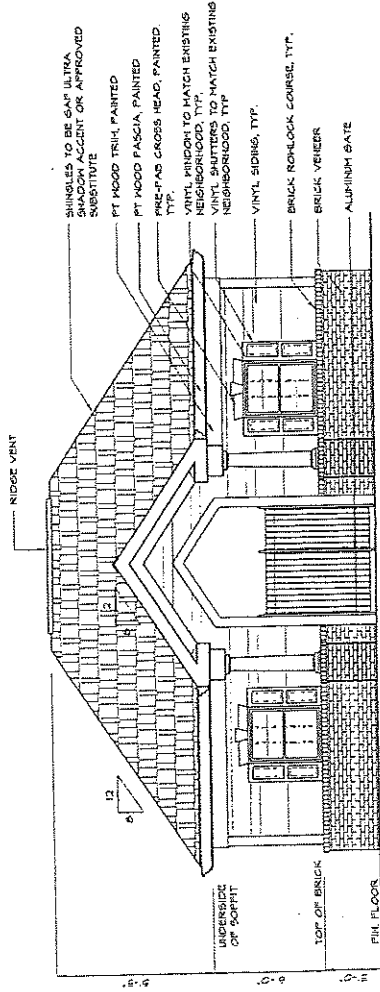
AMENITIES COMMON AREA MC5

217,939 sq.ft. ±

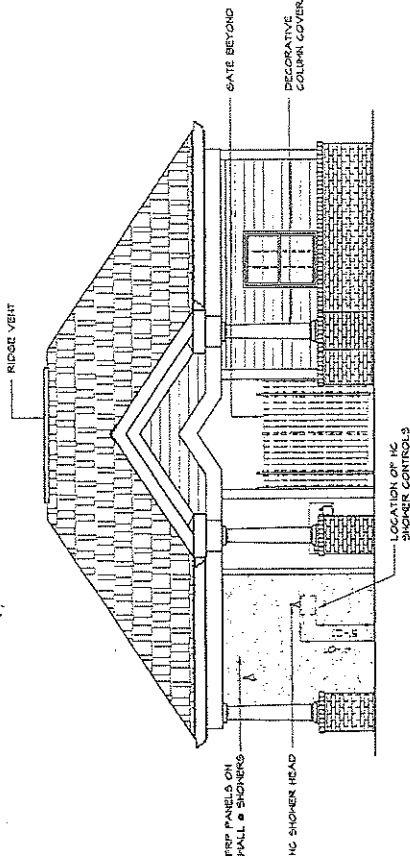
5.003 acres ±



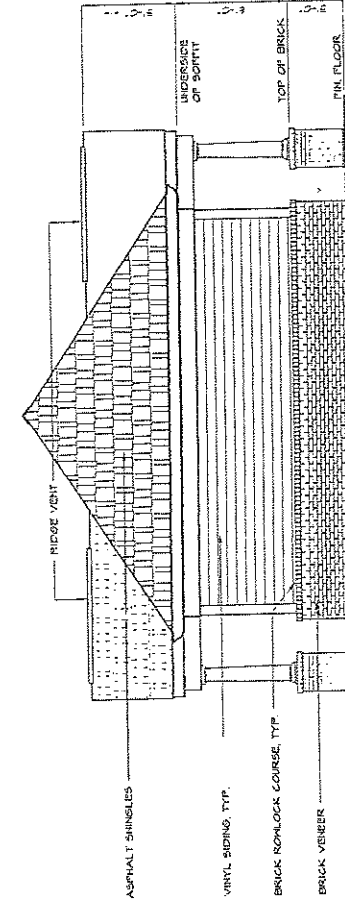
Meadowfield Cabana



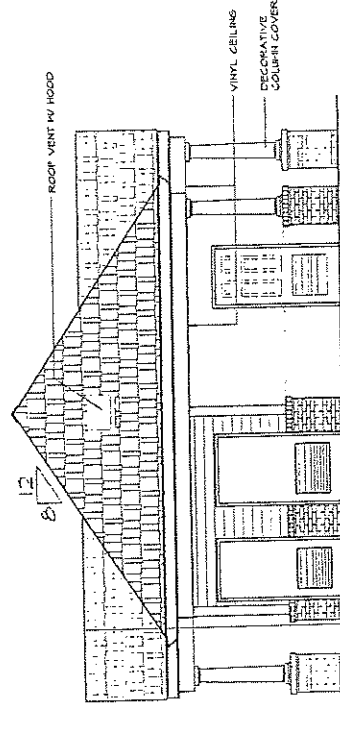
1 FRONT ELEVATION
A-2 1/4" = 1'-0"



3 REAR ELEVATION
A-2 1/4" = 1'-0"



4 LEFT SIDE ELEVATION
A-2 1/4" = 1'-0"



2 RIGHT SIDE ELEVATION
A-2 1/4" = 1'-0"