



September 2011

Buckingham County: “Owl Hollow” Farm & Retreat 60 Acres – \$159,000



4 Streams! 15 acres of fertile bottomland with Maxey Creek running through. Plenty of water for irrigation. 25 acres upland well drained for pasture or hay. Four streams in all with excellent pondsite. Acres of mature hardwoods and 6 acres of mature loblolly pine that has been thinned and groomed. Estate setting overlooking the streams. Driveway in place. Perked, electric, hardtopp road frontage. 10 miles from Scottsville and 30 miles from Charlottesville.

HIGHLIGHTS:

- Pasture, hardwoods, mature pines
- Views!
- Bottomland can be irrigated
- Perks, electricity, driveway
- Frontage on Route 20
- 10 minutes from Scottsville, 30 minutes Charlottesville
- Recently timbered



CYNTHIA HASH, REALTOR/SRES/GRI/AHA/CSSS/CRPS/GREEN/VHDA/NOTARY

1885 Seminole Trail, Suite 100, 2nd Floor • Charlottesville, VA 22901

Cell (434) 531-5351 • Fax (801) 681-0286 • hash@kw.com • www.AgingYourWay.org

WANT MORE IN A WEBSITE IN CVILLE? www.FindHomesInCharlottesville.com

IS YOUR HOUSE PAID FOR? www.PayOffYourHome.org

MAP & DIRECTIONS:

<http://maps.google.com/maps/ms?ie=UTF8&hl=en&msa=0&msid=202592558365138376652.000499fa3e89fd7e137e3&ll=37.65583,-78.501949&spn=0.068359,0.10437&z=13>



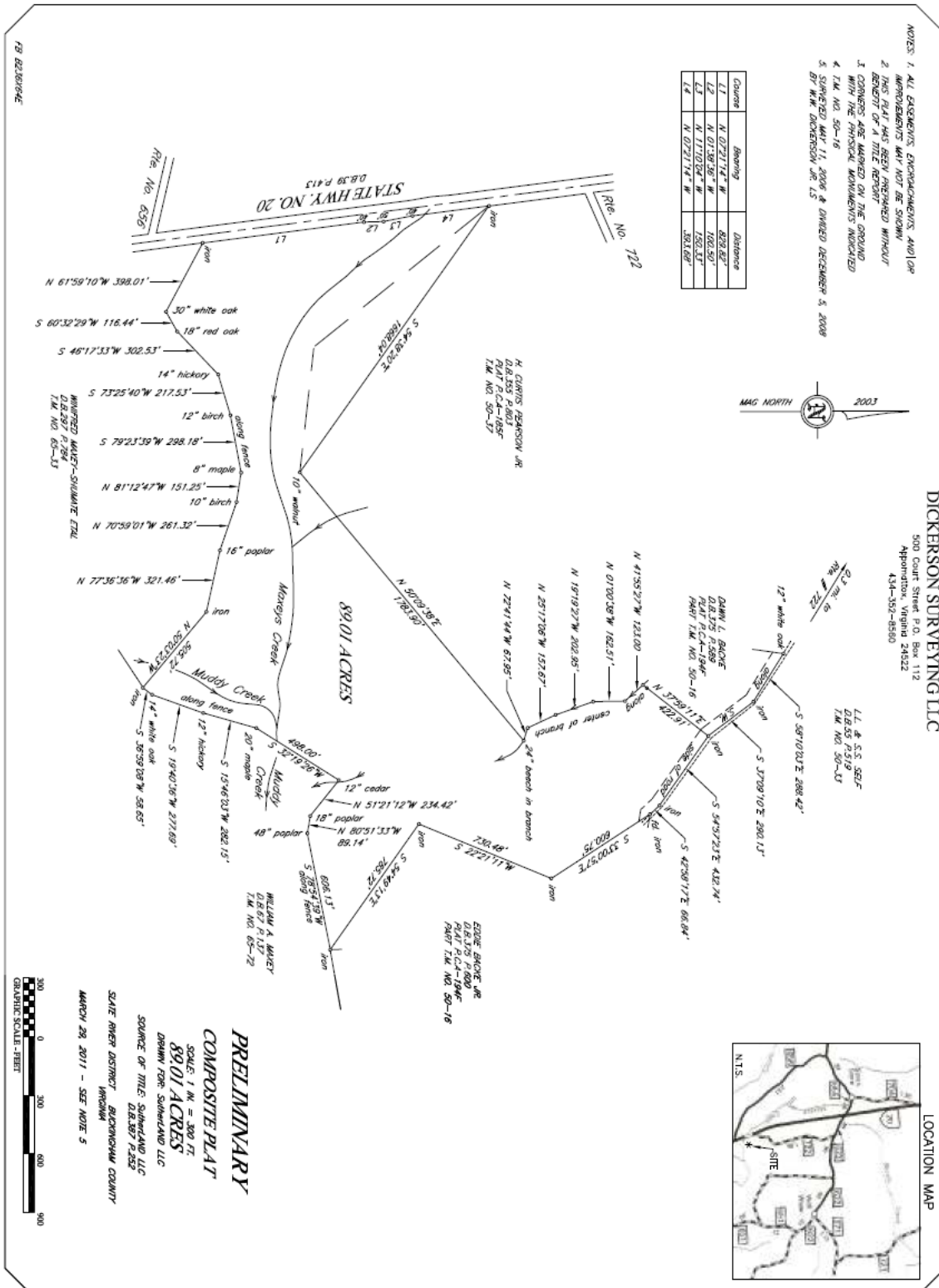
CYNTHIA HASH, REALTOR/SRES/GRI/AHA/CSSS/CRPS/GREEN/VHDA/NOTARY

1885 Seminole Trail, Suite 100, 2nd Floor • Charlottesville, VA 22901

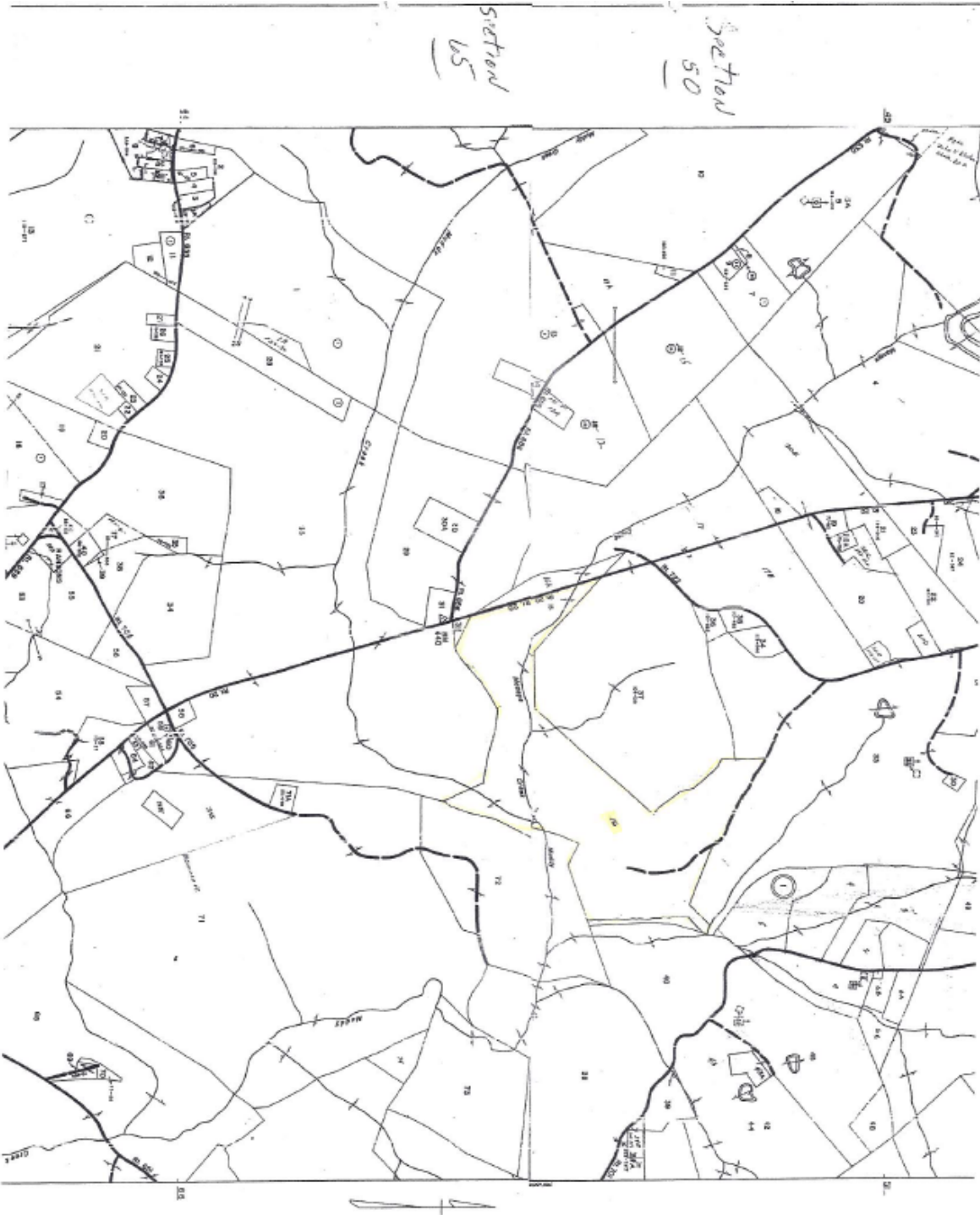
Cell (434) 531-5351 • Fax (801) 681-0286 • hash@kw.com • www.AgingYourWay.org

WANT MORE IN A WEBSITE IN CVILLE? www.FindHomesInCharlottesville.com

IS YOUR HOUSE PAID FOR? www.PayOffYourHome.org



CYNTHIA HASH, REALTOR/SRES/GRI/AHA/CSSS/CRPS/GREEN/VHDA/NOTARY
 1885 Seminole Trail, Suite 100, 2nd Floor • Charlottesville, VA 22901
 Cell (434) 531-5351 • Fax (801) 681-0286 • hash@kw.com • www.AgingYourWay.org
 WANT MORE IN A WEBSITE IN CVILLE? www.FindHomesInCharlottesville.com
 IS YOUR HOUSE PAID FOR? www.PayOffYourHome.org



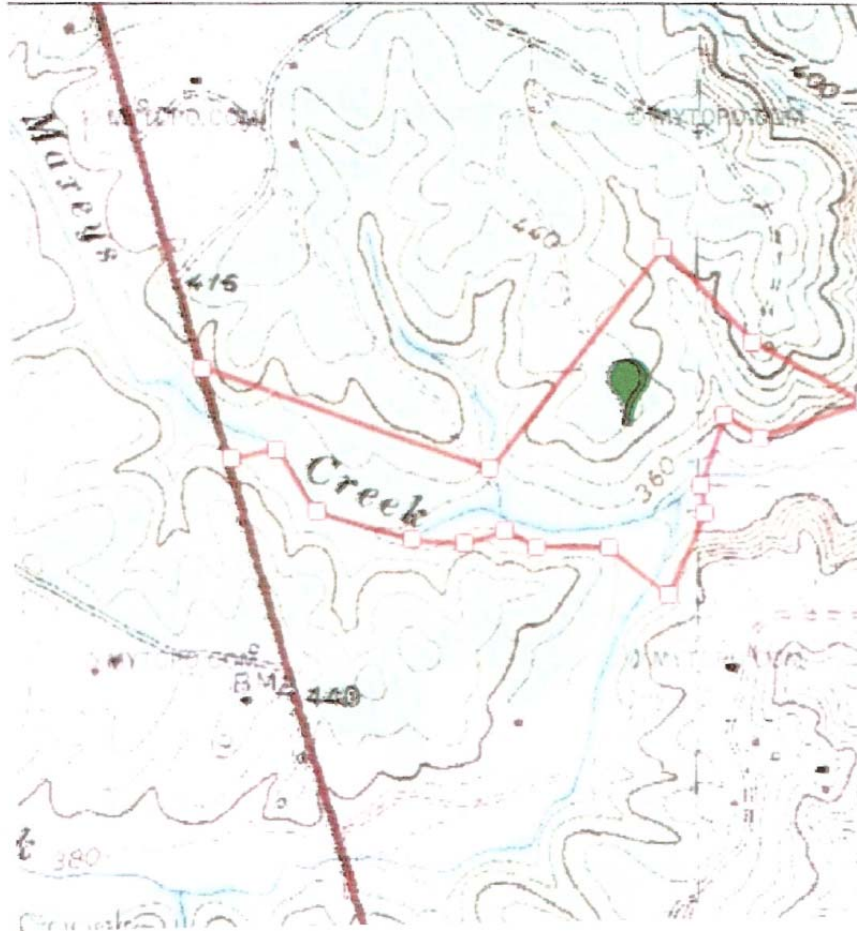
CYNTHIA HASH, REALTOR/SRES/GRI/AHA/CSSS/CRPS/GREEN/VHDA/NOTARY

1885 Seminole Trail, Suite 100, 2nd Floor • Charlottesville, VA 22901

Cell (434) 531-5351 • Fax (801) 681-0286 • hash@kw.com • www.AgingYourWay.org

WANT MORE IN A WEBSITE IN CVILLE? www.FindHomesInCharlottesville.com

IS YOUR HOUSE PAID FOR? www.PayOffYourHome.org



I can show you any property. Just give me a call at (434) 531-5351 for more information!

Warm regards,

A handwritten signature in blue ink that reads 'Cynthia Hash'.

Cynthia Hash, Realtor/SRES
Your Trusted Real Estate Professional

P.S. I love referrals! Is there someone you know who is interested in buying, selling, building or investing in real estate ... or paying off their mortgage in a fraction of the time? If so, call me!



CYNTHIA HASH, REALTOR/SRES/GRI/AHA/CSSS/CRPS/GREEN/VHDA/NOTARY

1885 Seminole Trail, Suite 100, 2nd Floor • Charlottesville, VA 22901

Cell (434) 531-5351 • Fax (801) 681-0286 • hash@kw.com • www.AgingYourWay.org

WANT MORE IN A WEBSITE IN CVILLE? www.FindHomesInCharlottesville.com

IS YOUR HOUSE PAID FOR? www.PayOffYourHome.org