



September 2011

Pittsylvania County: John's Run Creek
(Less than \$1,500 per acre)

309 Acres – will divide:

37 Acres – \$59,000 ♦ 272 Acres – \$325,000



7,000 feet of hardtop road frontage

HIGHLIGHTS:

- 309 acres available with more than 1 mile (7,000') hardtop road frontage
- Several streams
- Potential for 12 acre lake
- Lovely building spots
- New survey
- Old house
- Recently timbered



CYNTHIA HASH, REALTOR/SRES/GRI/AHA/CSSS/CRPS/GREEN/VHDA/NOTARY

1885 Seminole Trail, Suite 100, 2nd Floor • Charlottesville, VA 22901

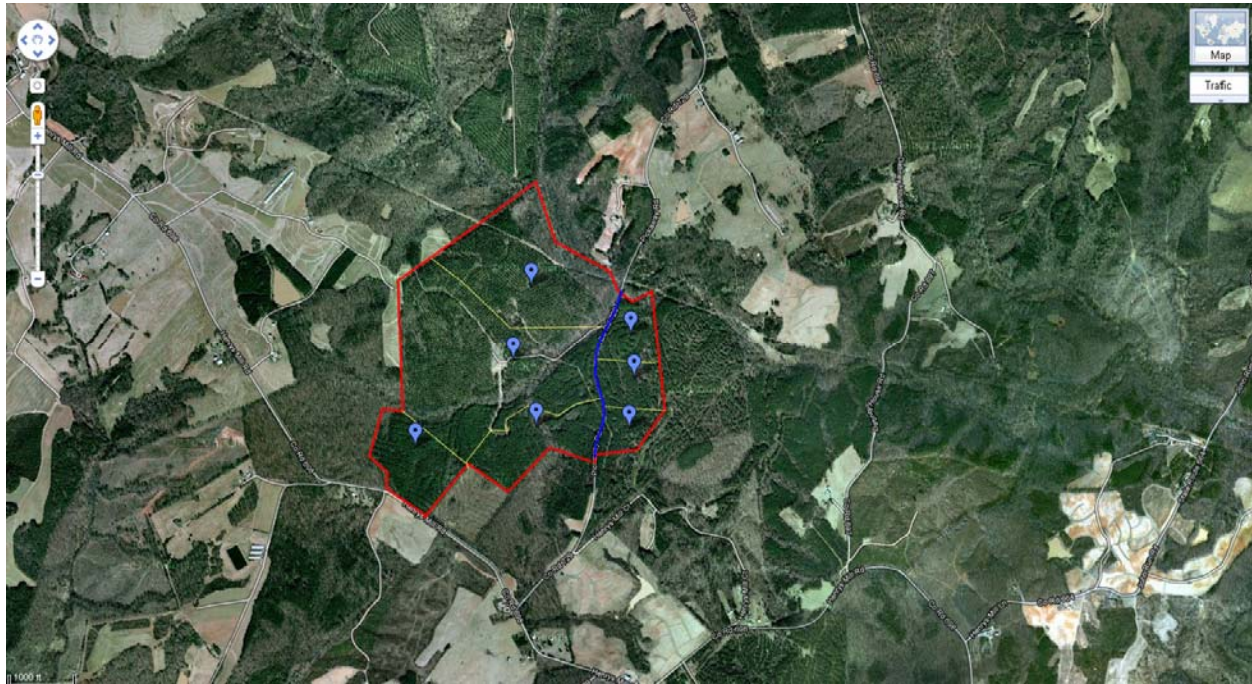
Cell (434) 531-5351 • Fax (801) 681-0286 • hash@kw.com • www.AgingYourWay.org

WANT MORE IN A WEBSITE IN CVILLE? www.FindHomesInCharlottesville.com

IS YOUR HOUSE PAID FOR? www.PayOffYourHome.org

MAP & DIRECTIONS:

<http://maps.google.com/maps/ms?ie=UTF8&hl=en&msa=0&msid=202592558365138376652.0004992b8e234a7f47164&ll=36.792172,-79.183702&spn=0.017287,0.026093&t=h&z=15>



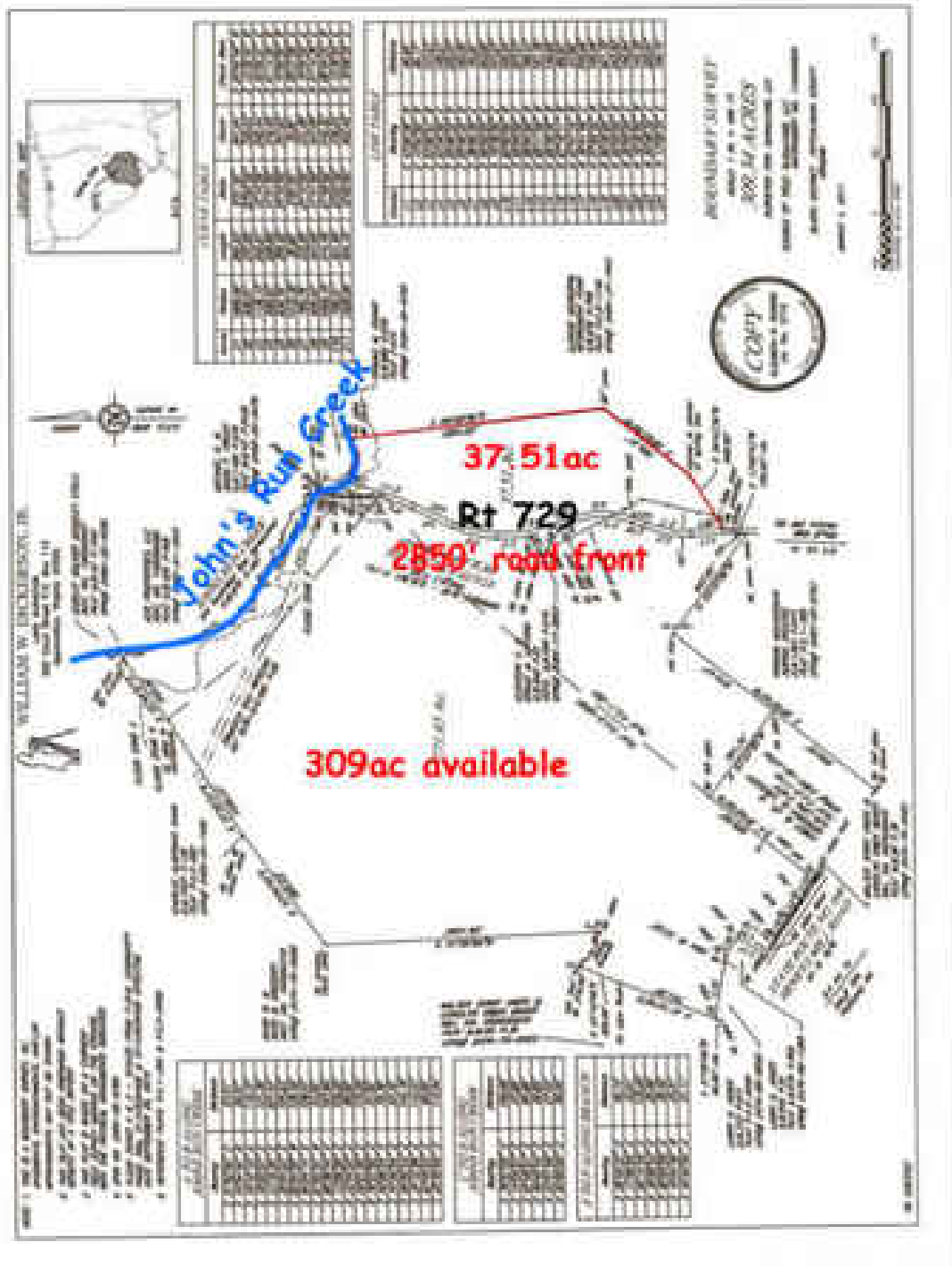
CYNTHIA HASH, REALTOR/SRES/GRI/AHA/CSSS/CRPS/GREEN/VHDA/NOTARY

1885 Seminole Trail, Suite 100, 2nd Floor • Charlottesville, VA 22901

Cell (434) 531-5351 • Fax (801) 681-0286 • hash@kw.com • www.AgingYourWay.org

WANT MORE IN A WEBSITE IN CVILLE? www.FindHomesInCharlottesville.com

IS YOUR HOUSE PAID FOR? www.PayOffYourHome.org



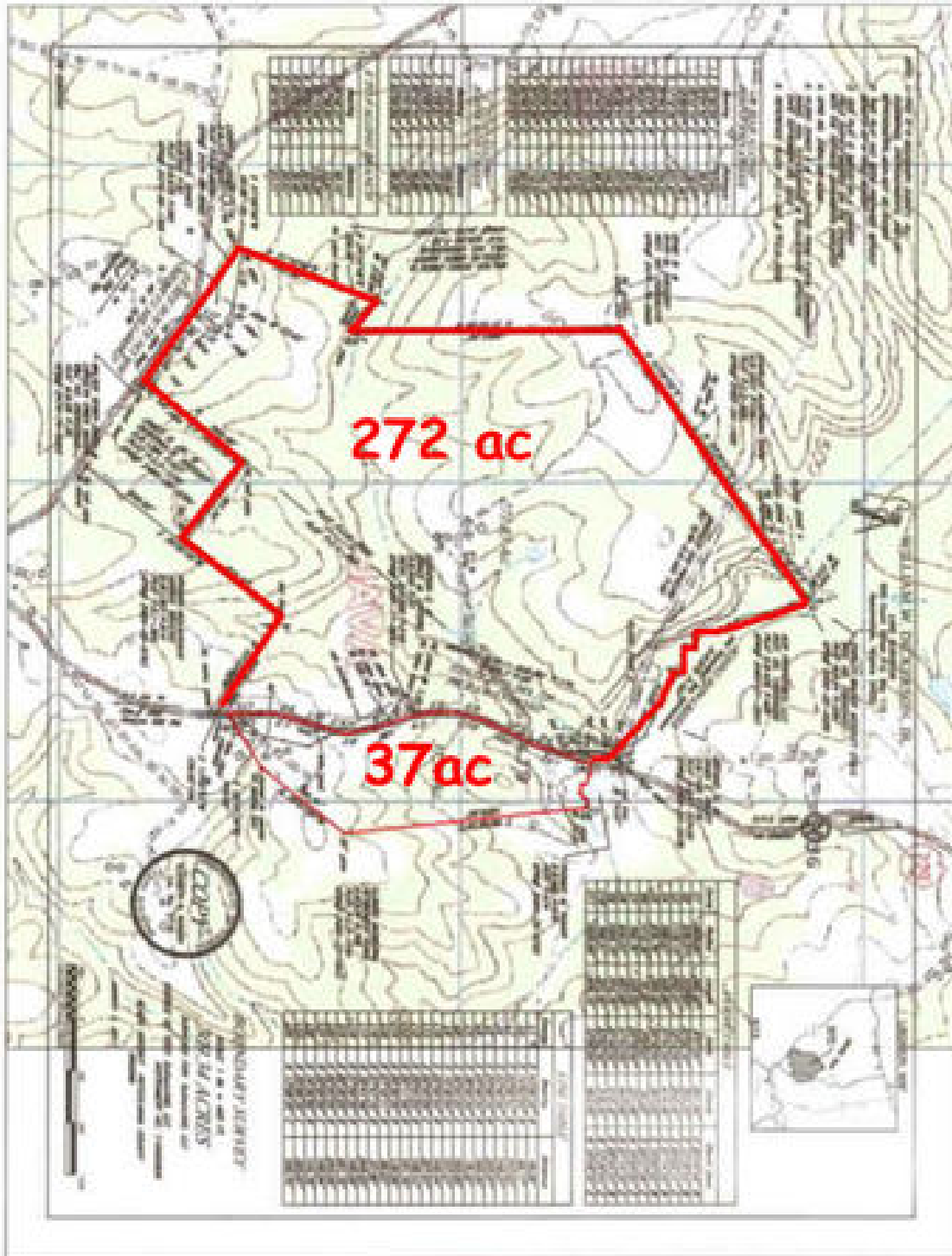
CYNTHIA HASH, REALTOR/SRES/GRI/AHA/CSSS/CRPS/GREEN/VHDA/NOTARY

1885 Seminole Trail, Suite 100, 2nd Floor • Charlottesville, VA 22901

Cell (434) 531-5351 • Fax (801) 681-0286 • hash@kw.com • www.AgingYourWay.org

WANT MORE IN A WEBSITE IN CVILLE? www.FindHomesInCharlottesville.com

IS YOUR HOUSE PAID FOR? www.PayOffYourHome.org



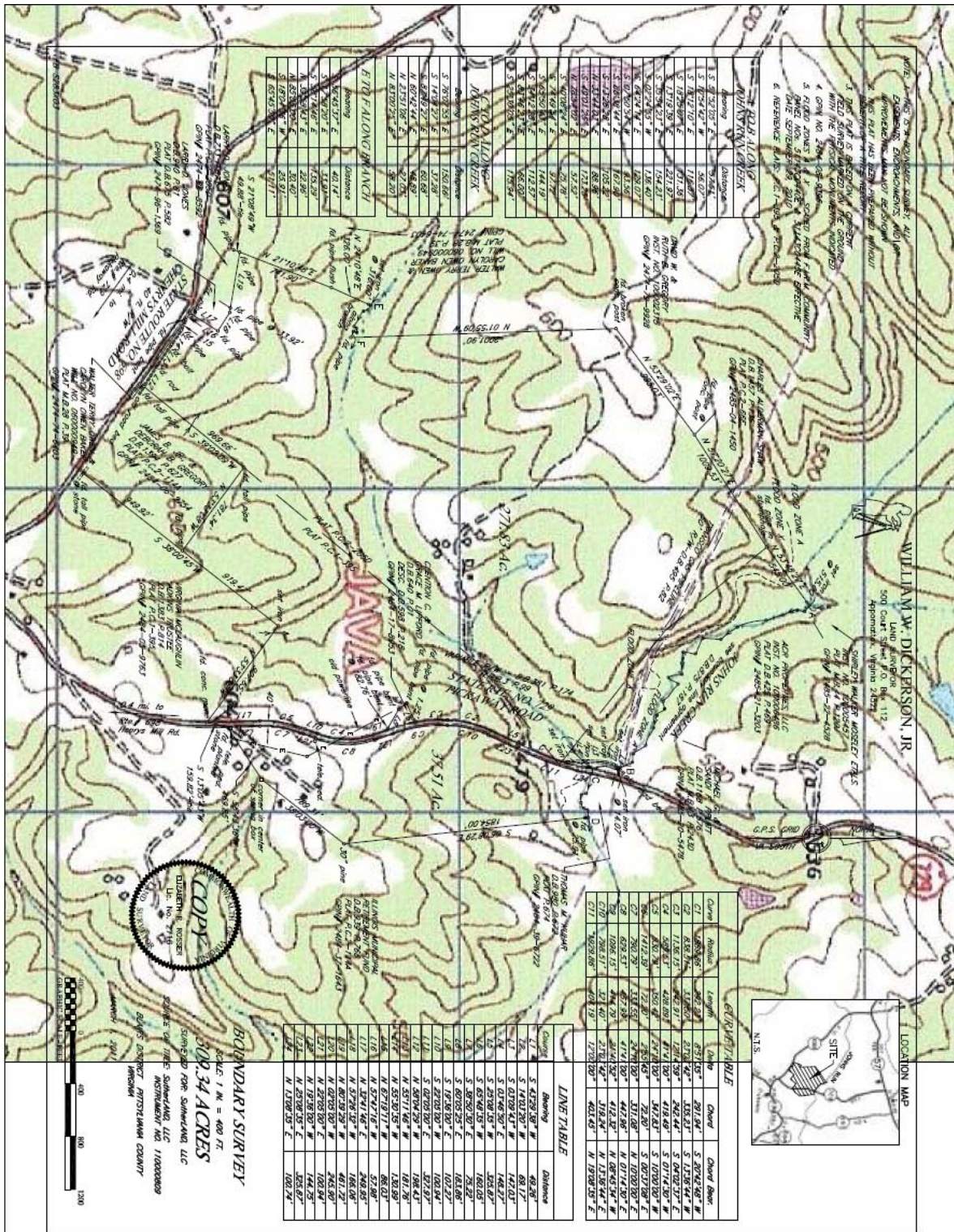
CYNTHIA HASH, REALTOR/SRES/GRI/AHA/CSSS/CRPS/GREEN/VHDA/NOTARY

1885 Seminole Trail, Suite 100, 2nd Floor • Charlottesville, VA 22901

Cell (434) 531-5351 • Fax (801) 681-0286 • hash@kw.com • www.AgingYourWay.org

WANT MORE IN A WEBSITE IN CVILLE? www.FindHomesInCharlottesville.com

IS YOUR HOUSE PAID FOR? www.PayOffYourHome.org



CYNTHIA HASH, REALTOR/SRES/GRI/AHA/CSSS/CRPS/GREEN/VHDA/NOTARY
 1885 Seminole Trail, Suite 100, 2nd Floor • Charlottesville, VA 22901
 Cell (434) 531-5351 • Fax (801) 681-0286 • hash@kw.com • www.AgingYourWay.org
 WANT MORE IN A WEBSITE IN CVILLE? www.FindHomesInCharlottesville.com
 IS YOUR HOUSE PAID FOR? www.PayOffYourHome.org



I can show you any property. Just give me a call at (434) 531-5351 for more information!

Warm regards,

Cynthia Hash, Realtor/SRES

Your Trusted Real Estate Professional

P.S. I love referrals! Is there someone you know who is interested in buying, selling, building or investing in real estate ... or paying off their mortgage in a fraction of the time? If so, call me!



CYNTHIA HASH, REALTOR/SRES/GRI/AHA/CSSS/CRPS/GREEN/VHDA/NOTARY

1885 Seminole Trail, Suite 100, 2nd Floor • Charlottesville, VA 22901

Cell (434) 531-5351 • Fax (801) 681-0286 • hash@kw.com • www.AgingYourWay.org

WANT MORE IN A WEBSITE IN CVILLE? www.FindHomesInCharlottesville.com

IS YOUR HOUSE PAID FOR? www.PayOffYourHome.org