



September 2011

Buckingham County: Evergreen Forest
41 Acres - \$99,000
47 Acres - \$119,000



Residential with hardtop road frontage. Whispering pines that have been thinned leaving those 12" in diameter and up.

HIGHLIGHTS:

- Perked
- Electric
- Pine trees
- Hardtop road frontage
- Driveway in place
- Stream, pond site



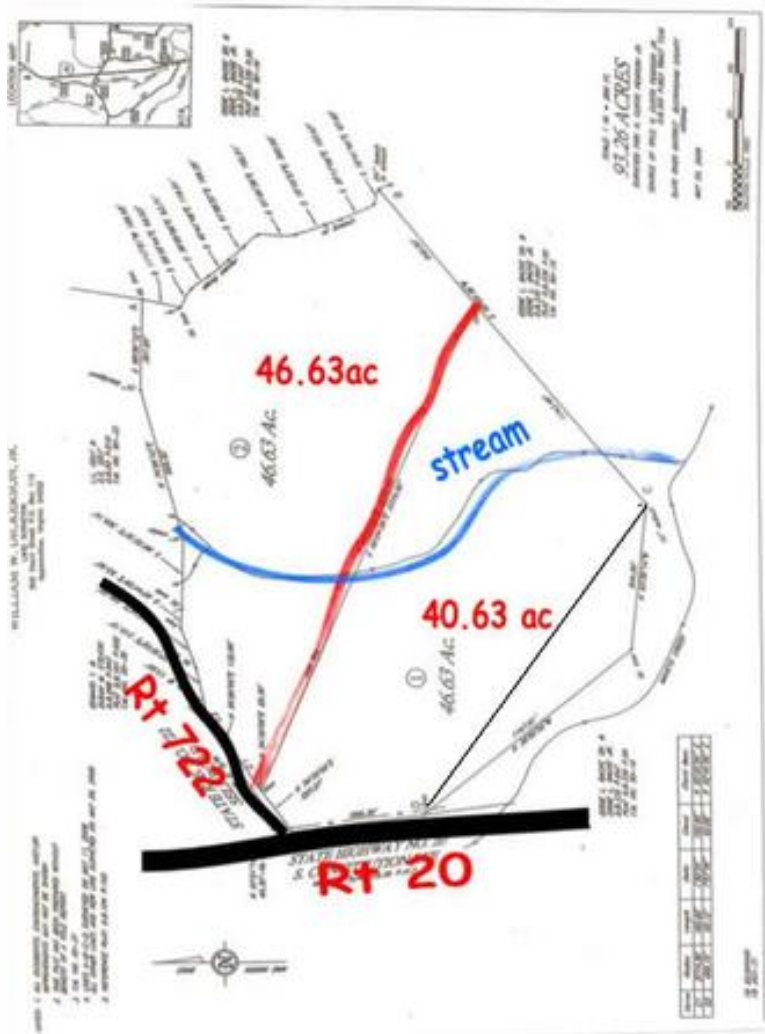
CYNTHIA HASH, REALTOR/SRES/GRI/AHA/CSSS/CRPS/GREEN/VHDA/NOTARY

1885 Seminole Trail, Suite 100, 2nd Floor • Charlottesville, VA 22901

Cell (434) 531-5351 • Fax (801) 681-0286 • hash@kw.com • www.AgingYourWay.org

WANT MORE IN A WEBSITE IN CVILLE? www.FindHomesInCharlottesville.com

IS YOUR HOUSE PAID FOR? www.PayOffYourHome.org



I can show you any property. Just give me a call at (434) 531-5351 for more information!

Warm regards,

Cynthia Hash, Realtor/SRES

Your Trusted Real Estate Professional

P.S. I love referrals! Is there someone you know who is interested in buying, selling, building or investing in real estate ... or paying off their mortgage in a fraction of the time? If so, call me!



CYNTHIA HASH, REALTOR/SRES/GRI/AHA/CSSS/CRPS/GREEN/VHDA/NOTARY

1885 Seminole Trail, Suite 100, 2nd Floor • Charlottesville, VA 22901

Cell (434) 531-5351 • Fax (801) 681-0286 • hash@kw.com • www.AgingYourWay.org

WANT MORE IN A WEBSITE IN CVILLE? www.FindHomesInCharlottesville.com

IS YOUR HOUSE PAID FOR? www.PayOffYourHome.org