



September 2011

Buckingham County: Ducker Creek Farm - \$199,000
72 acres w/ 1,800 feet Ducker Creek frontage



Mostly Open Mowing Land. Beautiful farmland with nice stream, very private with driveway in place. Hardtop Road frontage and cedar entrance fence.

HIGHLIGHTS:

- Hardtop road frontage
- Driveway in place
- Entrance fence made of cedar



CYNTHIA HASH, REALTOR/SRES/GRI/AHA/CSSS/CRPS/GREEN/VHDA/NOTARY

1885 Seminole Trail, Suite 100, 2nd Floor • Charlottesville, VA 22901

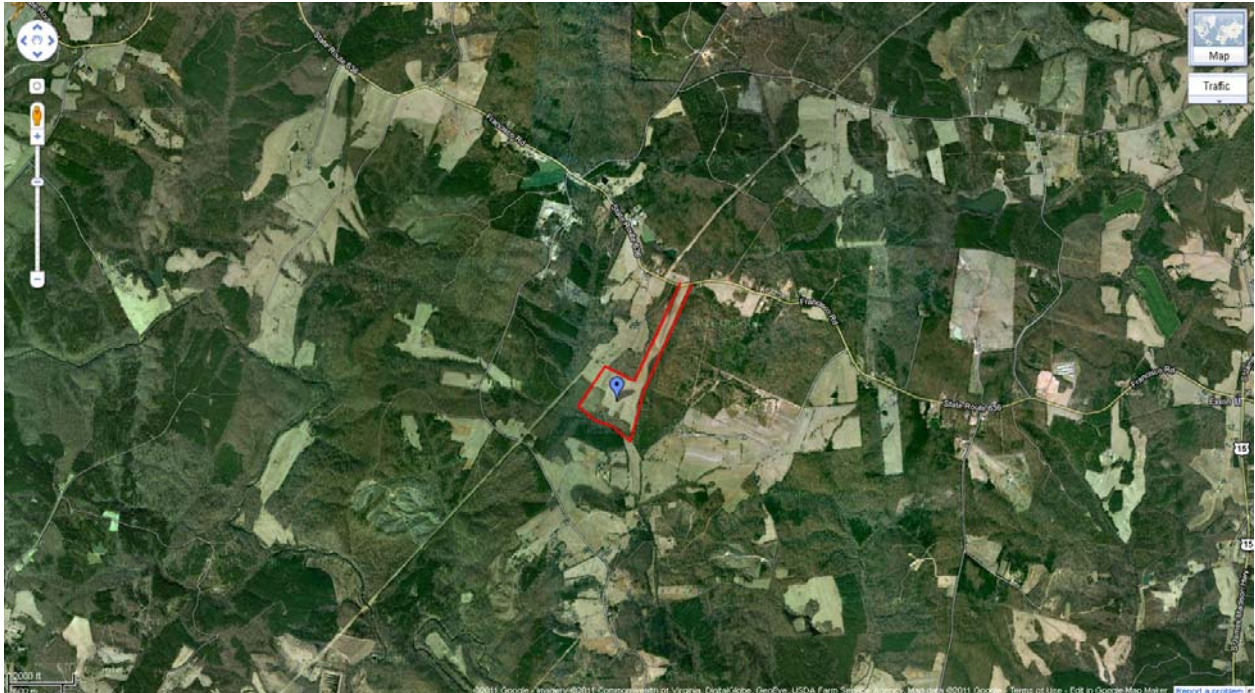
Cell (434) 531-5351 • Fax (801) 681-0286 • hash@kw.com • www.AgingYourWay.org

WANT MORE IN A WEBSITE IN CVILLE? www.FindHomesInCharlottesville.com

IS YOUR HOUSE PAID FOR? www.PayOffYourHome.org

MAP & DIRECTIONS:

<http://maps.google.com/maps/ms?ie=UTF8&hl=en&msa=0&ll=37.395051,-78.549585&sfn=0.01715,0.026093&t=h&z=15&msid=202592558365138376652.00049f79440efb17b1836>



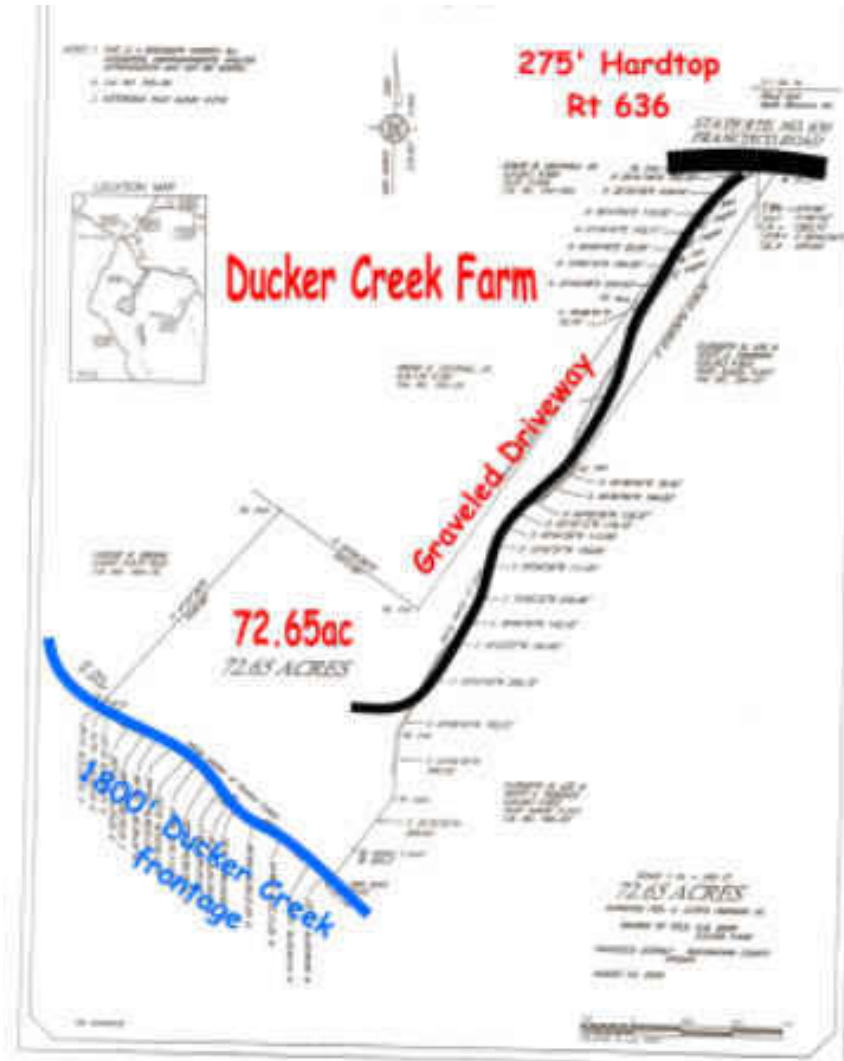
CYNTHIA HASH, REALTOR/SRES/GRI/AHA/CSSS/CRPS/GREEN/VHDA/NOTARY

1885 Seminole Trail, Suite 100, 2nd Floor • Charlottesville, VA 22901

Cell (434) 531-5351 • Fax (801) 681-0286 • hash@kw.com • www.AgingYourWay.org

WANT MORE IN A WEBSITE IN CVILLE? www.FindHomesInCharlottesville.com

IS YOUR HOUSE PAID FOR? www.PayOffYourHome.org



I can show you any property. Just give me a call at (434) 531-5351 for more information!

Warm regards,

Cynthia Hash, Realtor/SRES
Your Trusted Real Estate Professional

P.S. I love referrals! Is there someone you know who is interested in buying, selling, building or investing in real estate ... or paying off their mortgage in a fraction of the time? If so, call me!



CYNTHIA HASH, REALTOR/SRES/GRI/AHA/CSSS/CRPS/GREEN/VHDA/NOTARY

1885 Seminole Trail, Suite 100, 2nd Floor • Charlottesville, VA 22901

Cell (434) 531-5351 • Fax (801) 681-0286 • hash@kw.com • www.AgingYourWay.org

WANT MORE IN A WEBSITE IN CVILLE? www.FindHomesInCharlottesville.com

IS YOUR HOUSE PAID FOR? www.PayOffYourHome.org