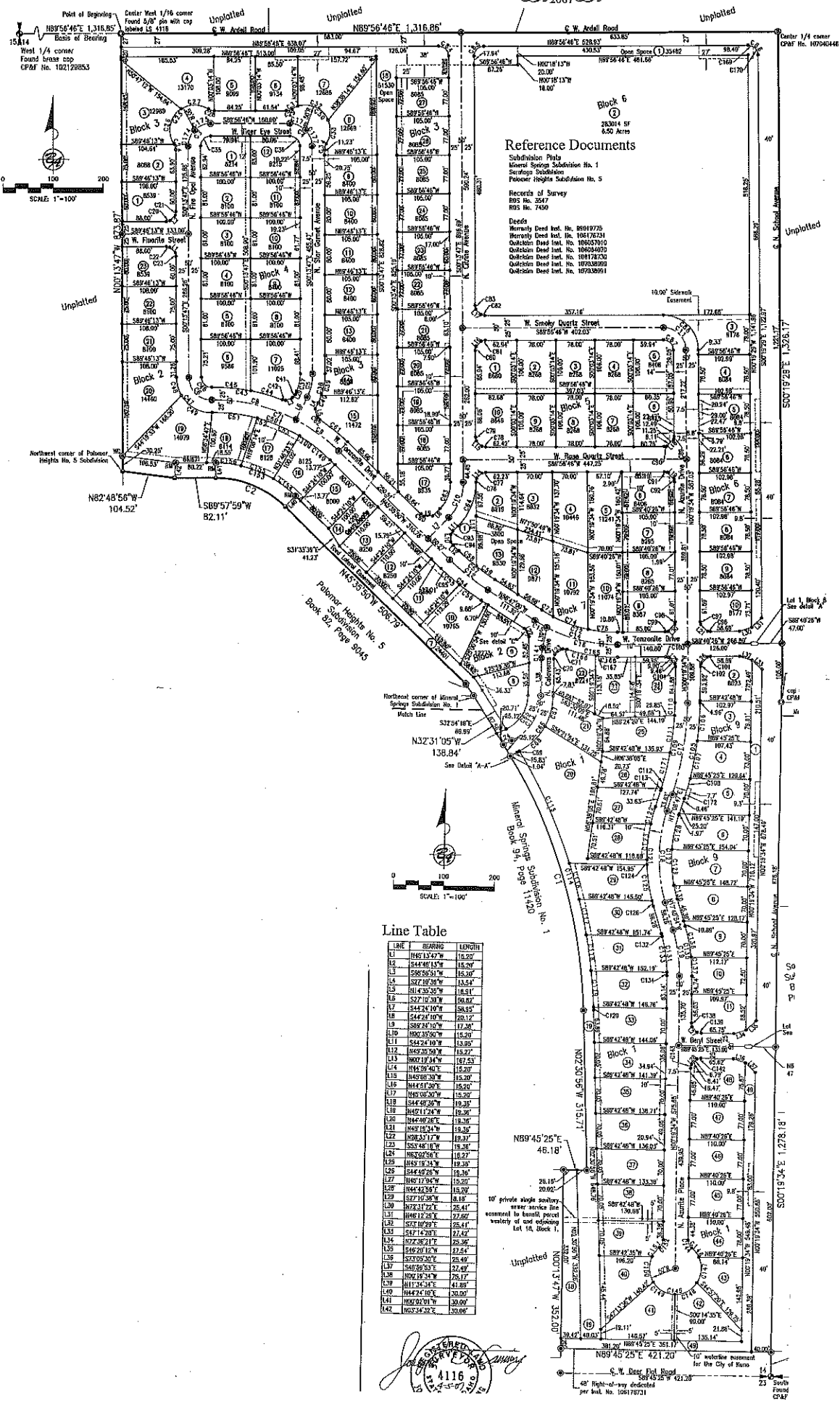


# Mineral Springs Subdivision No. 2

A parcel of land situate in the east one-half of the southeast quarter of Section 14, Township 2 North, Range 1 West, Boise Meridian, Kuna City, Ada County, Idaho

© 2007



## Reference Documents

Subdivision Plans  
 Mineral Springs Subdivision No. 1  
 Serpentine Subdivision  
 Palomar Heights Subdivision No. 5

Records of Survey  
 RRS No. 3247  
 RRS No. 7430

Deeds  
 Warranty Deed No. 10010725  
 Warranty Deed No. 10017234  
 Quitclaim Deed No. 100637010  
 Quitclaim Deed No. 100606079  
 Quitclaim Deed No. 100172320  
 Quitclaim Deed No. 100338289  
 Quitclaim Deed No. 100338291

Line Table

LINE	BEARING	LENGTH
L1	N82°13'52"W	15.20'
L2	S44°48'13"W	15.20'
L3	S89°26'51"W	15.20'
L4	N82°18'30"W	13.54'
L5	N14°25'28"W	15.81'
L6	S27°10'30"W	19.82'
L7	S44°24'10"W	18.85'
L8	S44°24'10"W	20.12'
L9	S89°45'50"W	15.20'
L10	S44°24'10"W	13.85'
L11	S44°24'10"W	15.27'
L12	S89°26'51"W	17.53'
L13	S89°26'51"W	15.20'
L14	N14°25'28"W	15.20'
L15	N45°08'30"W	15.20'
L16	N45°08'30"W	25.20'
L17	N82°18'30"W	15.20'
L18	S44°48'26"W	19.35'
L19	N42°11'24"W	19.36'
L20	N44°40'26"W	19.36'
L21	N45°08'30"W	19.36'
L22	N89°33'17"W	19.37'
L23	S83°48'18"W	19.36'
L24	N89°33'17"W	19.36'
L25	S44°48'26"W	19.36'
L26	S44°48'26"W	19.36'
L27	N45°08'30"W	15.20'
L28	N44°40'26"W	15.20'
L29	S27°10'30"W	18.11'
L30	N73°31'22"E	25.41'
L31	N46°12'30"E	27.62'
L32	S73°18'29"E	25.41'
L33	S47°47'20"E	22.42'
L34	S72°36'17"E	25.36'
L35	S46°20'13"W	27.24'
L36	S73°09'20"E	25.49'
L37	S46°58'20"E	22.49'
L38	N00°19'34"W	25.17'
L39	N11°36'34"E	41.89'
L40	N44°24'18"E	30.00'
L41	N02°02'01"W	20.00'
L42	N03°34'32"E	30.00'

NOTED  
 4116  
 12-25-07

10' private single roadway, sewer service line connected to basins, parcel width of one adjoining lot 16, Block 1.

40' Right-of-way dedicated to the City of Kuna per book No. 106178731